

LPA 30 Selected Projects

2026.03.18



©2026 Lighting Planners Associates Inc.

All rights reserved. No part of this publication may be used, reproduced or transmitted in any form or by any means, electronic or mechanical, including photocopy, recording, or any information storage and retrieval system, for any purpose whatsoever, without permission in writing. All rights to this publication are held by Lighting Planners Associates Inc. Requests for permission to use or make copies of any part of this publication should be mailed or emailed to:

Permissions

Lighting Planners Associates Inc.
1-11-8-1F Tsukuda, Chuo-ku, Tokyo,
104-0051 Japan
Tel : +81 3 4500 6380 Fax : +81 3 4500 6383
<http://www.lighting.co.jp> mail: lpa@lighting.co.jp

China National Convention Center Phase II

2024 Beijing, China
Beijing North Star Company / 2Portzamparc / HBA / CallisonRTKL / Valode & Pistre Architectes

This is one of China's leading convention centers. The architecture is shaped like Kumpeng, a mythical creature spreading its wings, embodying a sense of lightness while conveying dignity and familiarity. The design also symbolizes hope and peace for the future. The interior design is rooted in the concept of "Harmonious coexistence and the unity between humanity and nature." The design skillfully integrates sequences of light, materials, and space to create a ceremonial conference environment conveying the memory of civilization. A modest and simple approach produces this distinctive lighting environment, while also emphasizing energy efficiency and low-carbon performance.



One Za'abeel

2023 Dubai UAE

Investment Corporation of Dubai (ICD) / Nikken Sekkei

A new iconic gateway now stands along the highway connecting Dubai International Airport to the city. The structure is two high-rise towers on either side of the highway, joined at 100 meters above ground by "THE LINK." The lighting design emphasizes the vertical volume of the towers with linear lighting tracing the glass fins. The tower podium features indirect lighting highlighting stacked louvers to create a layered silhouette effect. The external form of THE LINK is outlined with linear lighting, while uplights enhance the structural form. Decorative dot lights are added for extra drama to complete the design. The lighting plan was carefully designed to ensure the structure's visibility and impact at various distances, perspective, mid-range, and close-up.



Temporary Hall for Dazaifu Tenmangu

2023 Fukuoka Japan

Dazaifu Tenmangu / Sou Fujimoto Architects

This is a temporary hall for visitors to the shrine during a 3-year renovation of the main hall, the first time in 124 years. On the curved roof, a forest is floating, connected to the rich nature that surrounds it. Lighting mounted in the louver ceiling is finely adjusted for daytime, nighttime, and ritual ceremonies used by worshipers.



Ishikawa Prefectural Library

2022 Ishikawa Japan

Ishikawa Prefecture / Environment Design Institute
mindscape / TOTAL MEDIA

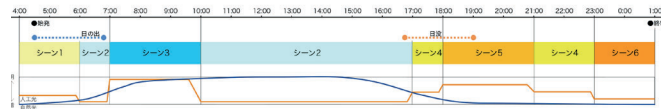
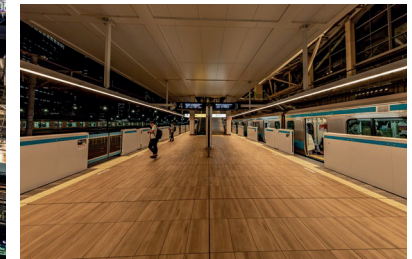
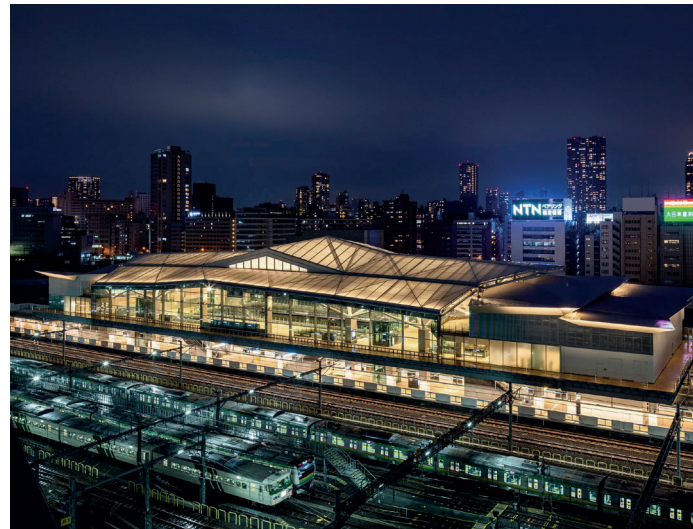
The upgraded prefectural library opened at a new site with more shelf-space and storage function that cannot be measured in just dimensions. The circular amphitheatre-style reading space, symbolizes a temple of knowledge that is filled with an overwhelming sense of majesty, with the bookshelves and books themselves serving as the center of the spatial elements. Several cozy reading corners are also spread throughout the browsing area, with an intimate and enjoyable children's area. The design focuses on a well-balanced arrangement of ambient and functional lighting that accompanies the unique character of each space, and is designed to create a cozy nightscape for this scenic area.



Takanawa Gateway Station

2020 Tokyo Japan
East Japan Railway / Shinagawa New Station Design Joint Venture / Kengo Kuma & Associates

For the first time in 49 years a new station has opened on the JR Yamanote Line. The uniquely-shaped roof covers the entire station building for an integrated design, while the lighting design aims to boost landmark appeal. Instead of conventional lighting methods figured around safe lux levels, the lighting design took lead from the architectural intent, and through a control system for dimming and color tones, aims to create a new type of train station conscious of ever-changing transitions of natural light.



Nagasaki City Nightscape

2020 Nagasaki Japan
Nagasaki City

Based on the Nagasaki City Nightscape Guidelines set in 2017, maintenance conducted in four main areas, including the Peace Park, Yamate Area, Meganebashi Bridge and Suwa Shrine, was completed. The new nightscape is exciting and makes one want to go for a nighttime stroll.



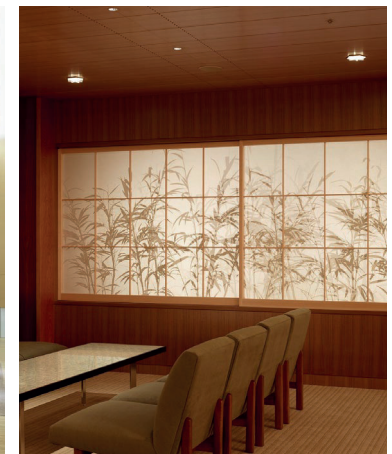
before the project



The Okura Tokyo

2019 Tokyo Japan
Hotel Okura / TANIGUCHI and ASSOCIATES /
G A Design International / KKS / TAISEI

With regret, Hotel Okura Tokyo Main Building closed its doors, but after renewal construction, reopened as The Okura Tokyo. The main lobby, beloved by foreign and Japanese guests, was faithfully recreated. The lighting design uses LEDs to create a soft lighting environment that beautifully adds a modern touch.



MAGICAL SHORES AT SILOSO

2020 Singapore
Sentosa Development Corporation / 1 → 10 Inc. / Hexogon Solution

A grand scale of multi-sensory experience that transforms Siloso Beach and its islets, on the resort island Sentosa, into an interactive light installation spectacle. The permanent installation along the 400-meter sandy beach was set as a part of the island revitalization program. Inspired by the rich biodiversity of the island, visitors can enjoy the interactive lighting and projections that respond to the weather and movement of people.



JEWEL CHANGI AIRPORT

2019 Singapore

Jewel Changi Airport Trustee / Safdie Architects / Benoy / RSP / PWP / ICN

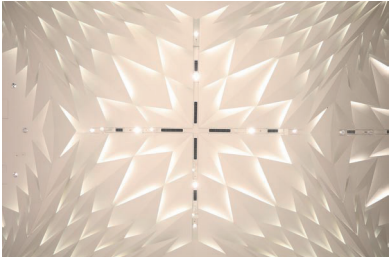
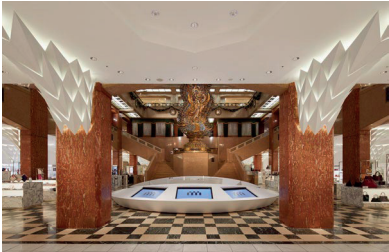
Strategically located in the heart of Singapore Changi Airport, Jewel Changi Airport (Jewel) is envisaged to be a world-class multi-dimensional lifestyle destination that comprises a myriad range of offerings including gardens and attractions, retail and dining offerings, a hotel and facilities for airport operations. The balance of daylight and the use of light fixtures is well thought out throughout the complex, and in the evening, expressions of light are still gradually changing as time slips by, for a full 24-hours of pre-set lighting operations.



Nihombashi Mitsukoshi

2018 Tokyo Japan
Isetan Mitsukoshi / Kengo Kuma and Associates

Renovation of the historical department store, which is listed as an important cultural property of Japan. The interior design concept is “a shining, white forest.” A pillar-supported “tree canopy” extends throughout the first floor of the main building and is beautifully illuminated with a gradation of light to provide a sense of unity in the retail space. Downlights are mounted in the geometrical ceiling pattern to emphasize paths of circulation and host gathering areas for customers.



Mt. Fuji World Heritage Centre, Shizuoka

2017 Shizuoka Japan
Shizuoka Prefecture / Shigeru Ban Architects / Tanseisha /
studio on site

A new facility to be used as a base for study and cultural output for Mt. Fuji, recently registered as a UNESCO World Cultural Heritage Site. The main gallery is clad in timber latticework. At night, light softly washes the gallery and the shape of Mt. Fuji is reflected in a pool of water with light seeming to shine from the mountain top.



guntū

2017 Hiroshima Japan
Setouchi Cruise / Setouchi Holdings / Tsuneishi Shipbuilding /
Yasushi Horibe Architect & Associates

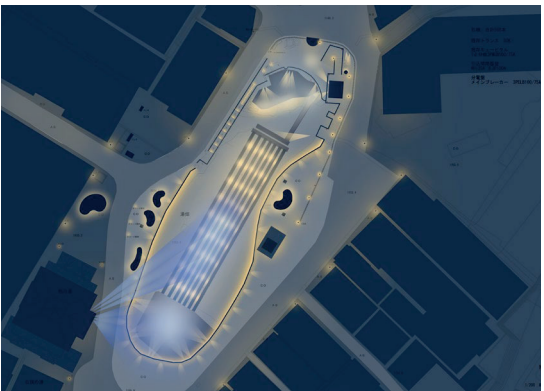
A 19-cabin passenger boat, which cruises around the placid inland sea of Setouchi. Although there are number of difficult restrictions for lighting fixture specifications due to Marine grade control, very high quality custom light fittings were made as a result of close coordination between the design and construction team. The large roof of the open deck is uplit, combined with torches to create a rhythmical effect. The exterior look of the ship is completed with lights glowing from the interior of the passenger cabins. When anchored, the ship adds a charming element to the nightscape.



KUSATSU ONSEN, YUBATAKE

2016 Gunma Japan
Kusatsu town / Kitayama & Company /
Kojiro Kitayama + K Architect & Associates

Kusatsu Hot Spring is a famous Japanese hot spring and very popular tourist location. In the last few years the landscape has begun to change as the surrounding infrastructure is upgraded. As part of this, an upgrade in street lights is planned from the hot water fields to Sainokawara Park. In the first round of construction, the after-hours lighting surrounding the symbolic Kusatsu Hot Water Fields was upgraded. The hot water beds are softly illuminated, coming to form amongst the rising steam to delight visitors.



AMANEMU

2016 Mie Japan
Mitsui Fudosan / Kerry Hill Architects

This is a villa-style resort project situated in a richly forested national park overlooking Ago Bay in Mie Prefecture. Trying to achieve minimalism of light, a key phrase for the lighting design is "dialog with moonlight." The lighting environment aims to help guest fully enjoy the bright display of moon and stars on cloudless nights with subdued landscape lighting, but also generate an atmosphere of high quality darkness.



National Gallery Singapore

2015 Singapore
National Gallery Singapore / studioMilou Singapore Pte Ltd /
CPG Corporation Pte Ltd

The largest art gallery in South-east Asia, the National Gallery spans across the Former Supreme Court and City Hall of Singapore. Linked together with new connections and an ever changing interplay of natural light and shadow. The exterior lighting is subtle, with details along the façade gently lit and the windows characterising a soft glow in the evening hours. The interior lighting pays homage to the building finishes and soft wash light with state-of-the-art exhibition lighting illuminates the largest collection of Asian art in a single complex.



SINO-OCEAN TAIKOO LI CHENG DU

2015 Chengdu, China

Sino-Ocean Land / Swire Properties / the Oval partnership /
Make Architects / AvroKO / Spawton Architecture & Elena
Galli Giallini Architecture & Design / Urbis

This large-scale development centered around the Daci Temple, includes a low-rise commercial area, hotel (THE TEMPLE HOUSE), and office tower (PINNACLE ONE CHENGDU). Several historical buildings remain on the property, but the addition of a modern, gable roofed shopping mall helps in creating a cosmopolitan streetscape. Vertical luminance washes the landscape, artwork and other elements and the eaves of the gabled roof are strategically lit up to create comfortable ambience for shoppers.

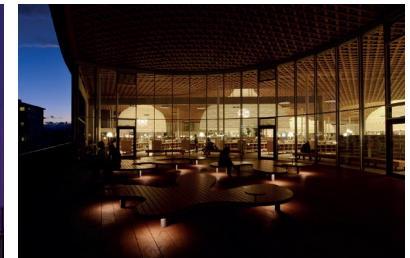
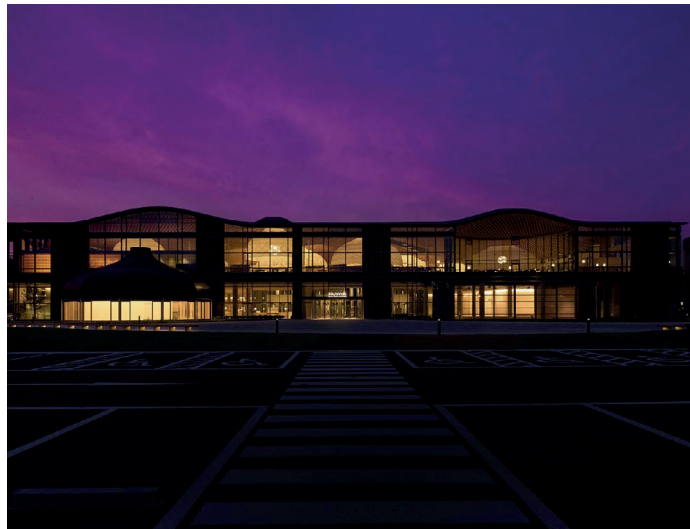


'MINNA NO MORI' GIFU MEDIA COSMOS

2015 Gifu Japan

Gifu City / Toyo Ito & Associates, Architects

The new library-based, multi-use complex was built in a centrally located downtown area. In the upper level open-reading room, large umbrella-shaped "globes", suspended from the timber ceiling, are actually interior environment devices used to incorporate daylight and circulate air. The globes are a central feature of the forest-fantasy-like design. The lighting design also emphasizes this connection to the natural world.



AMAN TOKYO

2014 Tokyo Japan
Tokyo Tatemono / Taisei Corporation / Kerry Hill Architects

Aman Tokyo is the newest luxury city hotel in Tokyo for the Aman Resort brand. The reception atrium features an expansive view of Tokyo metropolitan area. The lighting includes dynamic scene changes to fully enjoy this aerial garden according to different times of the day and evening. Placement of fixtures was also carefully executed to create a comfortable and relaxing area to enjoy the views.



Lighting Design For Preservation and Restoration of The Tokyo Station Marunouchi Building

2012 Tokyo, Japan
East Japan Railway / JR East Tokyo Electorical Consultation and System Integration Office / JR East Design

Rapid development around Tokyo Station has continued in recent years, and lubricant at the centre of it all is the 100 year old Tokyo Station Building renovation. Surrounded by a modern urban landscape of iron, glass and concrete, this red brick building is a slip in time. The kind of nightscape needed here is not one of eccentricity, but careful and precise ececution of cutting edge lighting methods to reproduce the beauty of this historical building. We stressed the importance of creating a tranquil and timeless evening scenery.



Gardens by the Bay, Bay South

2012 Singapore

National Parks Board / Grant Associates, Wilkinson Eyre, Architexts, CPG Consultants

Bay South Gardens is the first phase of Singapore's dramatic Gardens by the Bay project that opened to the public on 29th June 2012. The 54-hectare US\$820m project comprises of two 'Cooled Conservatories' and 18 distinctively shaped vertical garden structures called 'Supertrees'.

As it is a new form of outdoor entertainment for the general public and visitors coming to Singapore, we sought to underline the concept "Entertainment with Organic Lighting". While the lighting scheme ensures safety and entertains visitors, it is also a carefully detailed "Organic Lighting" that dramatizes shadow, eschews excessive lighting and harmonizes with the greenery and water.

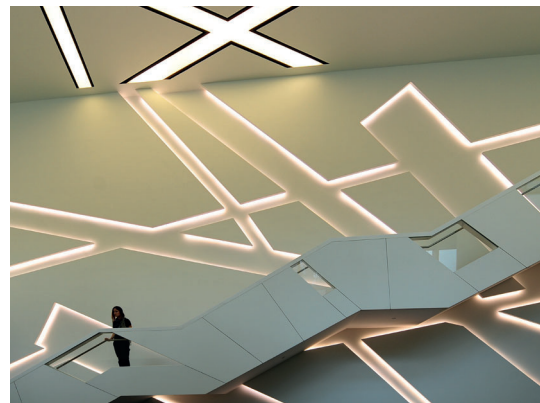


Reflections At Keppel Bay

2011 Singapore

Keppel Land / Studio Daniel Libeskind / DCA Architects

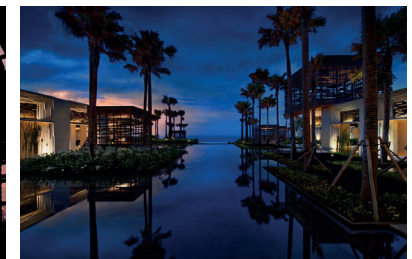
A landmark development on the waterfront of Singapore, the requirement for the lighting scheme was to be distinct yet soft enough for a residential ambience. Façade lighting is minimal with emphasis on the iconic crowns and tapering edges of the façade. Common areas have specially integrated LED lighting that accentuated the strong graphic character of the architectural skin and landscape features.



Alila Villas Uluwatu

2009 Indonesia
PT Bukit Uluwatu Villas / WOHA / CICADA

This is a villa style resort in southern Bali based on the concept "Force of Nature" and five key elements, wind, moonlight, fire, water, and trees to create a comfortable resort-style lighting design. We used not only the natural warmth of incandescent lamps, but also specified fluorescent lamps and LEDs for a new age of resort lighting, integrating the use of candles and LEDs.

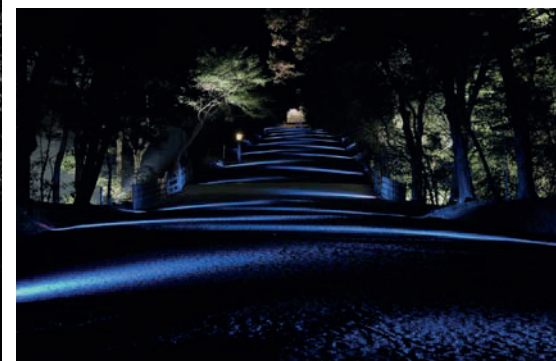
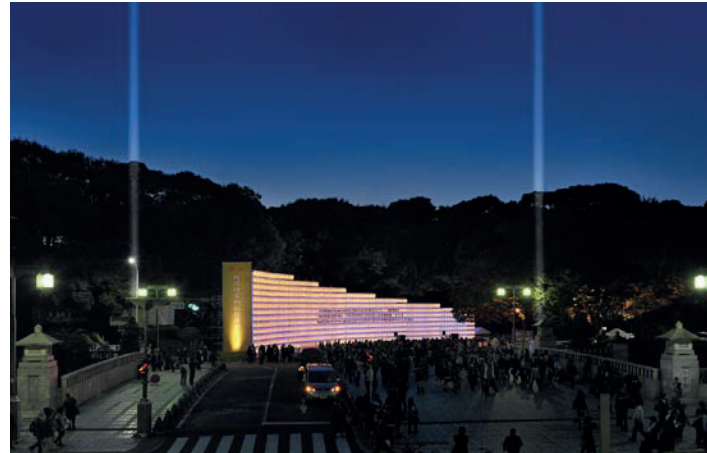


MEIJI JINGU akariumu

2008 Tokyo, Japan

Commemorating The 50th Anniversary Of The Restoration Of Meiji Jingu Committee

There is still dark beauty in Tokyo. To commemorate the 50th Anniversary of the Meiji Jingu Reconstruction, approaches and shrine buildings were illuminated in an artistic display of light. We based our design concept on the minimal use of light for an environment-friendly approach. We combined 21-century LEDs and ancient candlelight to achieve a progressive lighting environment. 150,000 visitors came to visit the shrine, enjoying light and darkness.



Lighting Masterplan For Singapore's City Center

2006 Singapore
URA

This lighting master plan for Singapore's city center enhances five qualities of this tropical metropolis, including the hot and humid climate, intense sunlight, lush greenery, cultural melting pot, and waterscape, to transform it into a contemporary garden city. The master plan also explores options to create a signature nightscape for the city and lays out distinctive guidelines for four main districts; Orchard Road, Singapore River, Bras Basah Bugis, Central Business District (CBD) and Marina Bay.



Kyoto State Guest House

2005 Kyoto, Japan
Nikken Sekkei

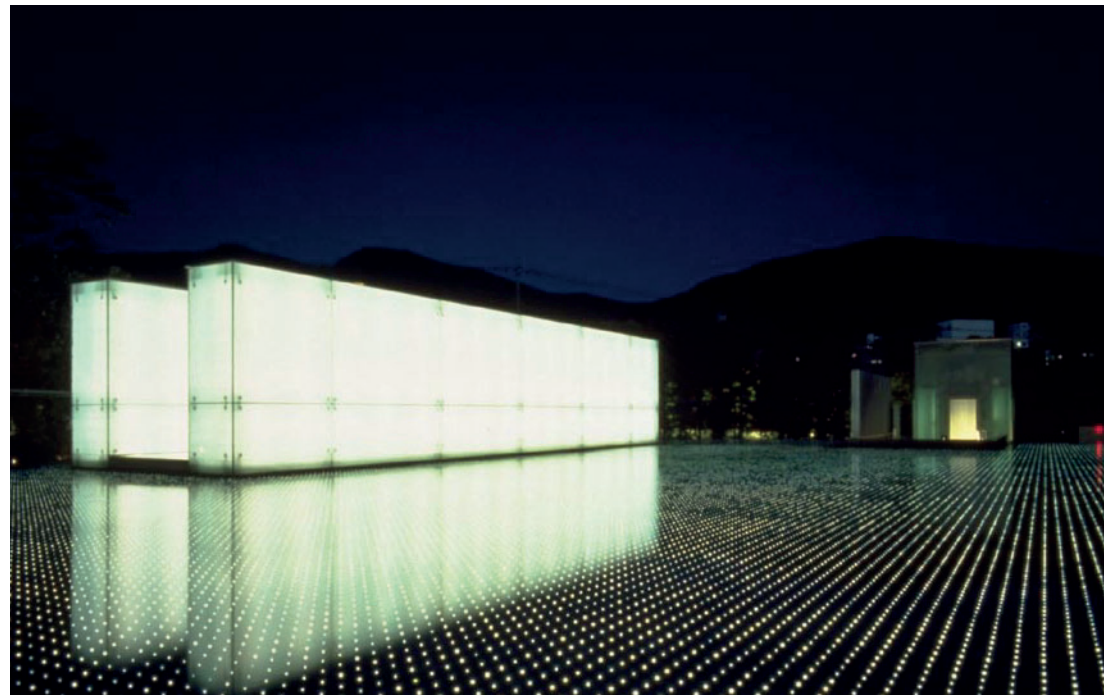
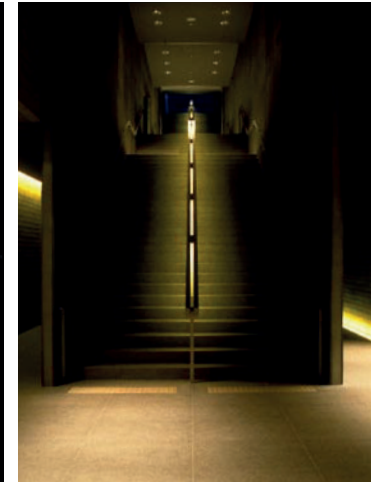
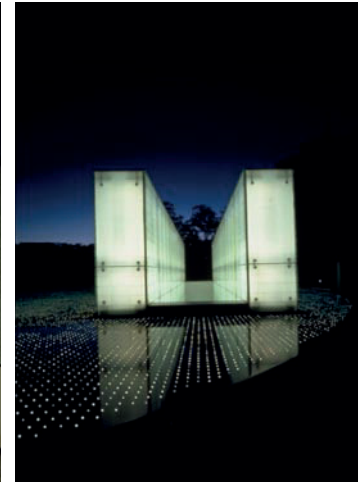
Located in the traditional and culturally rich Kyoto, Japan, the new State Guest House is a glow with Japanese Light. When visualizing "Japanese Light" we wanted to incorporate the following five elements into the lighting environment: (1) Express rich contrast, (2) Use reflection and permeation, (3) Value seasonal and daily changes, (4) Choreograph the field of vision along routes of circulation, and (5) Utilize the charm of natural light. All of these elements were realized through the design of high-level optical instruments and elaborate integration of architectural and furniture details. All without exposing the advanced technology used to secure comfort in this modern structure.



Nagasaki National Peace Memorial for The Atomic Bomb Victims

2003 Nagasaki, Japan
Kyushu Regional Development Bureau,
A.Kuryu Architect & Associates

Most of the building is found underground and a calmly flowing pool of water is seen on the ground surface. Thousands of tiny fiber optic lights are set in the stone base of the pool and these flicker in the water creating a night scene which conveys dignity and inspires the praying for peace.



Roppongi Hills

2003 Tokyo, Japan
Mori Building / The Jerde Partnership / Conran & Partners

LPA was responsible for the fine-tuning of the lighting of the external appearance and environment. Glare-free fixtures and warm lighting of 3000K are used throughout the area. 4 lighting operations - Shopping Time, Restaurant Time, Bar Time, Late Night Security Time - are also designed to give variation of mood and scenery.



Sendai Mediatheque

2000 Miyagi, Japan

Toyo Ito

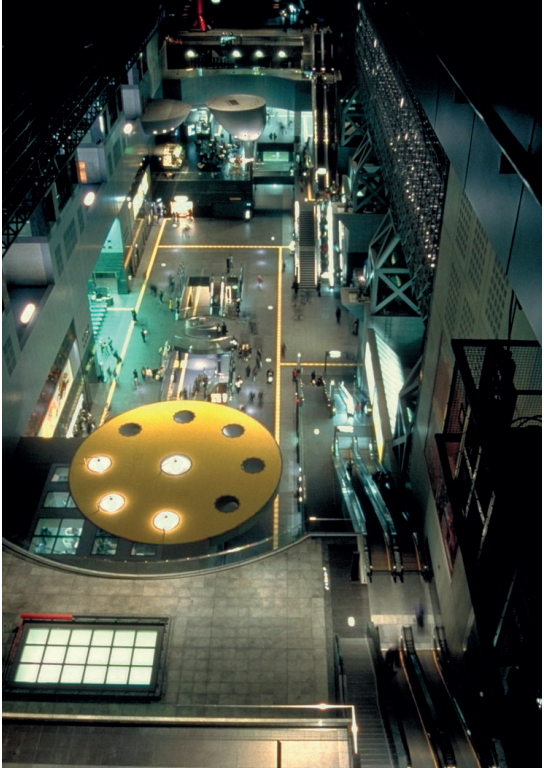
Lighting design not only reflecting the function of each floor but also expressing an architectural spaces of this glass architecture consisting of a multimedia library, a museum, multi-purpose spaces and its unique tube structure.



Kyoto Station

1997 Kyoto, Japan
Hiroshi Hara+Atelier Phi

The concept of shedding no excessive light alone instills in the space a beautiful darkness and creates a picturesque scene. In addition, it is effective in reducing energy consumption. However, we did not begin designing the lighting from the perspective of energy conservation. The concept phrase "In Praise of Shadows" is a creation of author Junichiro Tanizaki, and it represents the world-famous Japanese aesthetic of light.



Tokyo International Forum

1996 Tokyo, Japan
Rafael Vinoly

The entire complex including the structure shaped like a space-ship floating above the gigantic atrium; the self-standing light-walls in the hall; and the light-floor extending over the entire site emerges as an urban lantern by the dynamic architectural lighting technique. The lighting environment in this project had to be beautiful even if the amount of light was small, fulfilling its functions even if the lighting was not even, warm, pleasant to the eyes or controlled.

