




TOKYO | SINGAPORE | HONGKONG | SHENZHEN

A full-page background image showing a sunset over a body of water. The sky is a mix of deep blue, purple, and orange. Silhouettes of trees and a palm tree are visible against the bright horizon. In the foreground, the silhouettes of several people are standing on a beach or pier, looking out at the water. The overall mood is serene and contemplative.

The most important aspect of lighting design is learning from natural light.
Through the designing for superior lighting environments,
LPA strives to create comfortable, yet inspiring environments of daily life.



Contents

About LPA	4
------------------	---

Business Contents

1. Planning and Design	6
2. Consulting	7
3. Research and Development	8
4. Education and Cultural Awareness	9

Design Process

1. Concept Design	10
2. Schematic Design	11
3. Design Development	12
4. Tender Documentation	13
5. Site Supervision	14
6. Site Commissioning	15

Selected Awards	16
------------------------	----

About LPA

Lighting Planners Associates (LPA) is an organisation of lighting specialists established in 1990 led by Kaoru Mende. The goal of LPA is to design and build outstanding lighting environments that enrich our architectural and lighting culture. Today, LPA has a total of 60 unique lighting specialists at its offices in Tokyo, Singapore Hong Kong and Shenzhen. While the majority of LPA projects are in the area of architectural lighting design, its many outstanding design accomplishments have reached to residential, hotel, office, commercial, public space, and landscape lighting as well as full-scale urban lighting projects. LPA is regarded as a leading lighting consultancy in the world.





Kaoru Mende

Lighting Designer
Principal

Born in Tokyo in 1950, earned a bachelors and masters degree from Tokyo University of Art in the field of industrial and environmental design. In 1990, he founded Lighting Planners Associates Inc. The scope of his design and planning activities ranges widely from residential and architectural to urban and environmental lighting design. Mende is also the acting chief of the "Lighting Detectives", a citizens' group that specializes in the study of the culture of lighting.

Mende has been involved in such superb projects as Tokyo International Forum, JR Kyoto Station, Sendai Mediatheque, Roppongi Hills, Nagasaki National Peace Memorial Hall for the Atomic Bomb Victims, Kyoto State Guest House, National Museum of Singapore, Singapore City Center Lighting Master Plan, Alila Villas Uluwatu, Gardens by the Bay, Tokyo Station, Aman Tokyo, and Gifu Media Cosmos.

Awards Mende has received include the Illuminating Engineering Society of North America (IES) Award of Distinction, International Association of Lighting Designers (IALD) Radiance Award, Japan Culture Design Award, Mainichi Design Award, President's Design Award in Singapore and others. Mende is a visiting professor at Musashino Art University. Mende is a member of the following associations, Architectural Institute of Japan (IAIJ), Illuminating Engineering Society of North America (IES), International Association of Lighting Designers (IALD), and Japan Design Committee (JDC).

Books Mende has authored include, "Transnational Lighting Detectives" (Kajima Publishing), "LIGHTING DESIGN for Urban Environments and Architecture" (Rikuyosya), "Designing with Shadow" (Rikuyosya), "The Light Seminar" (Kajima Publishing), "A Manner in Architectural Lighting Design" (TOTO Publishing), "LPA 1990-2015, Tide of Architectural Lighting Design" (Rikuyosha), and many other.

Corporate Outline

Tokyo Office

Lighting Planners Associates Inc.

Pier West Square, North Wing 1F,
1-11-8 Tsukuda, Chuo-ku, Tokyo 104-0051, Japan
Tel : (81) 3 4500 6380
Fax : (81) 3 4500 6383
Email : lpa@lighting.co.jp

Singapore Office

Lighting Planners Associates (S) Pte. Ltd.

51B Neil Road, Singapore 088829
Tel : (65) 6734 3086
Fax : (65) 6734 2786
Email : singapore@lighting.co.jp

Hong Kong Office

Lighting Planners Associates (HK) Ltd.

Room 1005, 10/F, Tower 2, Silvercord, 30 Canton Road,
Tsim Sha Tsui, Kowloon, Hong Kong
Email : hongkong@lighting.co.jp

Shenzhen Office

Lighting Planners Associates (C) Ltd.

Room 425, Building 532, Baguailing Industrial Zone, Futian District, Shenzhen
518029, Guangdong, China
Tel : (86) 755 8229 9220
Fax : (86) 755 8229-9202
Email : shenzhen@lighting.co.jp

1. Planning and Design

For a successful and elaborate lighting scheme, LPA recommends being commissioned for all the phases in every project. These phases include a wide range of services classified in the following order: Concept Design, Schematic Design, Design Development, Tender and Award, Construction Supervision, Final Commissioning.

Such detailed services are used in a wide range of projects in:

- Architecture and Interiors : Office Complexes, Museums, Theaters and Auditoriums, Retail and Commercial Facilities. Hospitality Buildings, Residential Buildings, Healthcare, Transportation Facilities, Sports Facilities, Civic and Institutional Buildings, Educational and Religious Buildings
- Exterior and Urban Environment Planning : Lighting Masterplan for cities, Landscape Areas, Gardens, Parks, Bridges and Monuments

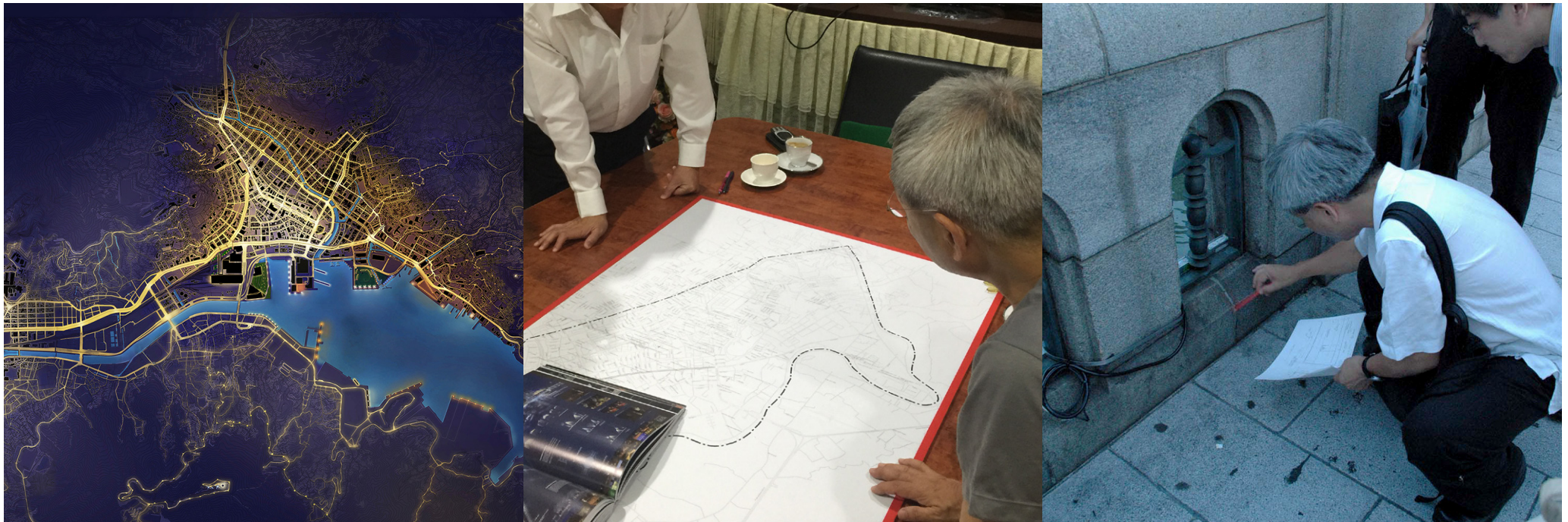


2. Consulting

For projects in which detailed phase-wise involvement is not required, LPA offers consultancy services within which we contribute to the overall improvement in the visual environment.

Such consultancy services are generally of the nature of limited time-based involvement in the following areas:

- Consultation to Corporate firms on effective and efficient usage of their illuminated environments
- Consultation to City Authorities and likewise organizations on procedures of evaluation and guidelines for the lighting aspect within Urban, Environmental and Architectural projects
- Research and Analysis of existing illuminated environments



3. Research and Development

LPA engages extensively in lighting product development, concept planning and applications design.

We are also involved in collaborative development with industry manufacturers on product and systems design.

LPA has intellectual assets to research the effects of light and applies them to the following:

- Design and development of new lighting fixtures
- Research and development of lighting design concepts for innovative projects
- Research and development of new lighting details, methods
- Investigative studies for the lighting industry dealing with effects of light on human behavior and cityscapes



4. Education and Cultural Awareness

LPA is constantly involved in lighting design education and tries to boost the prestige of lighting culture on a regional as well as global scale. The approach is to create an awareness of the benefits of good lighting and encourage good lighting practices across all demographics.

LPA has experience in the following areas:

- Exhibitions, lectures, symposiums and seminars on subjects of lighting
- Essays, Articles, Columns and Interviews for Publications
- Media Appearances (television, radio etc) as Guest Speakers to promote lighting awareness



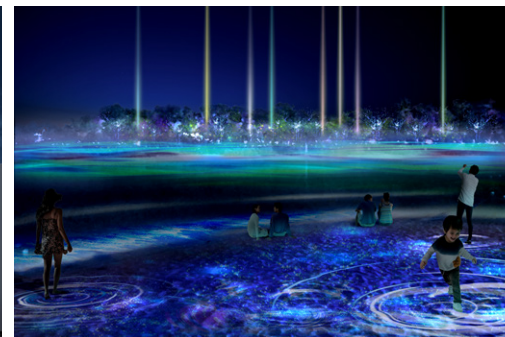
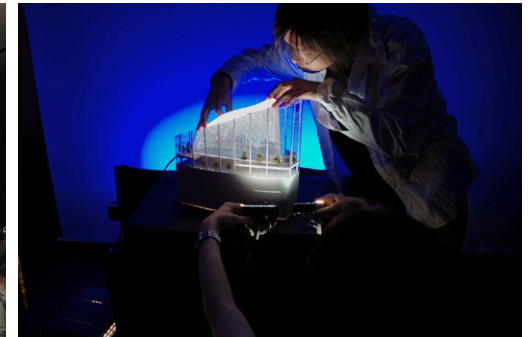
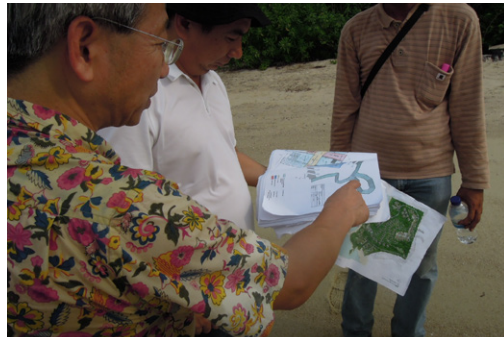
Design Process

Phase 1 Concept Design - Phase 2 Schematic Design - Phase 3 Detail Development - Phase 4 Tender Documentation - Phase 5 Site Supervision - Phase 6 Site Commissioning

Conceptualise a design scheme

We like to be involved in projects right from the early stages (Concept Design Phase + Schematic Design Phase) to fully consider what the concept and theme should be for the lighting design. We use this phase to properly understand the architectural intent and strategy, and then based on the lighting requirements, are able to prepare a lighting design concept.

1. Attendance in development and architectural project orientation
2. Survey of the lighting environment surrounding the project site
3. Review of reference images and/or study of possibly helpful lighting environments as case studies
4. Brainstorming and concept design workshops
5. Further study through lighting concept drawings and scale models
6. Development of a lighting master plan and/or strategy
7. Presentation of the lighting concept design



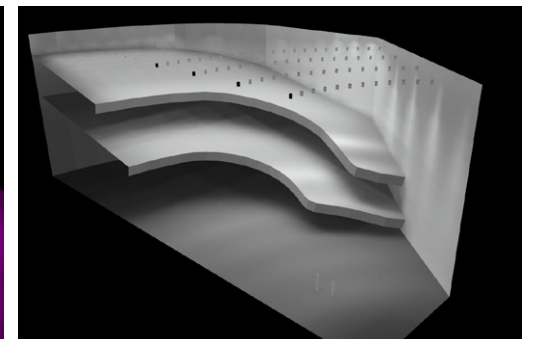
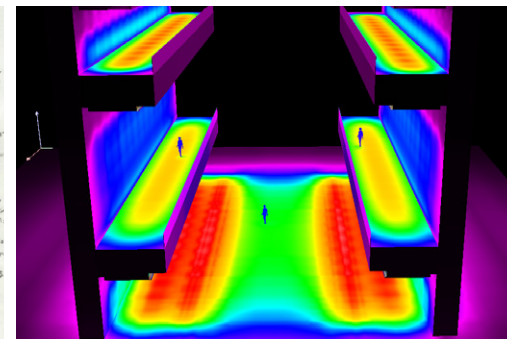
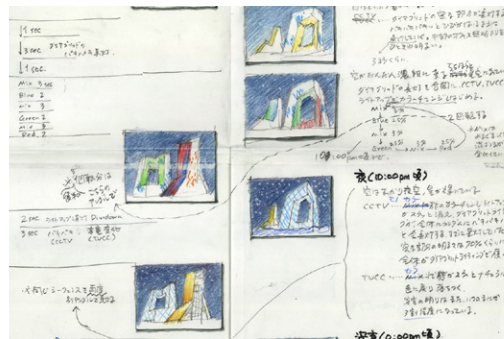
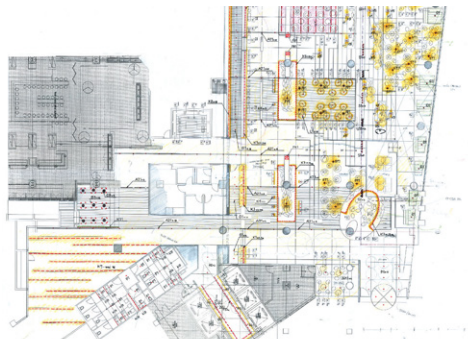
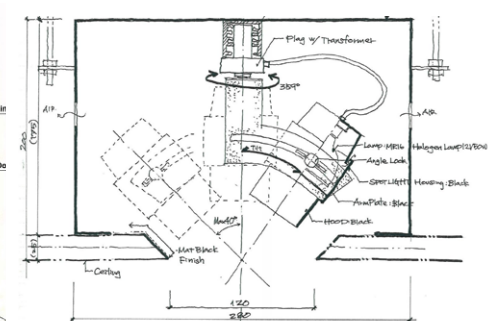
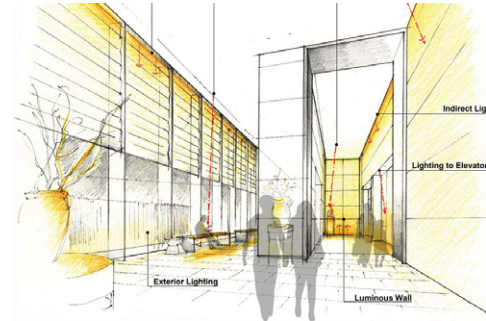
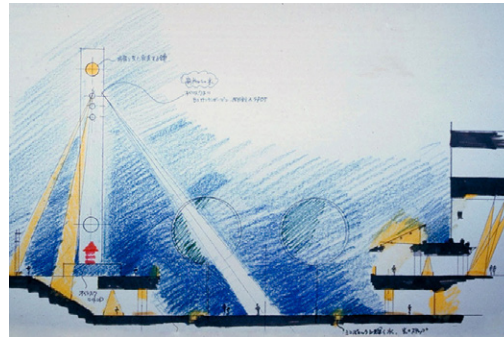
Design Process

Phase1 ConceptDesign-Phase2SchematicDesign-Phase3DetailDevelopment-Phase4TenderDocumentation-Phase5SiteSupervision-Phase6SiteCommissioning

Designing of a basic lighting scheme

Based on the approved lighting concept, during this phase we present the necessary lighting effects and techniques for a project. Generally, there is always more than one possible lighting method, and we like to consider as many options as possible without limiting our freedom of thought and targeting the given conditions of a project. Also, approximate cost estimates are analysed through feasibility studies.

1. Study and analysis of various lighting methods
2. Study through the use of models with lighting effects and/or simulations
3. Development of CG simulations and/or CG renderings
4. Schematic lighting fixtures layout and schedules
5. Schematic lighting control systems if considered necessary for the project
6. General outline of lighting control systems and operation schedules
7. General calculation of designed illuminance levels if necessary
8. Calculation of approximate cost estimates



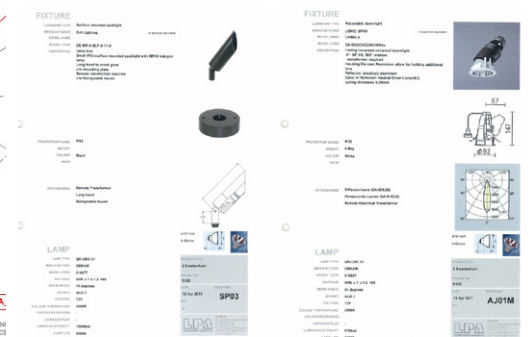
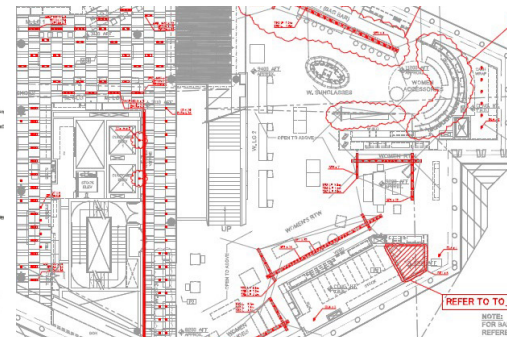
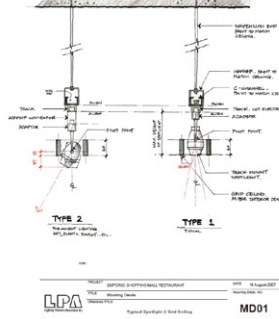
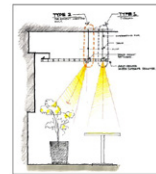
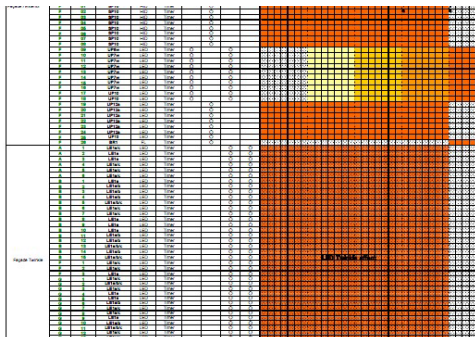
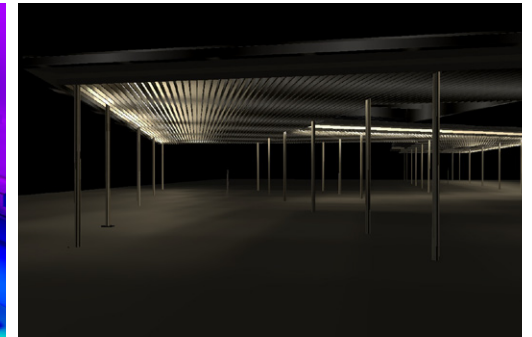
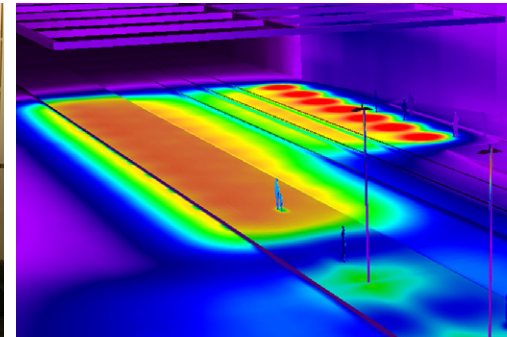
Design Process

Phase1 ConceptDesign-Phase2SchimaticDesign-Phase3DetailDevelopment-Phase4TenderDocumentation-Phase5SiteSupervision-Phase6SiteCommissioning

Designing of lighting details

During this phase, we target feasible options from our initial design framework for finalisation. After many consultations with the Client, architects, and other consultants on the project, we analyse our design in greater detail to prepare documentation for approval. LPA lays emphasis on the overall cost of the lighting proposal and maintenance-friendly design during this phase.

1. Detailed analysis of lighting effects through mock ups
2. Finalisation of lighting fixtures layout and performance specifications
3. Design of custom-made light fixtures
4. Analysis of mounting details and coordination with architectural details
5. Operation schedules
6. Cost estimates
7. Design revisions due to budget adjustments



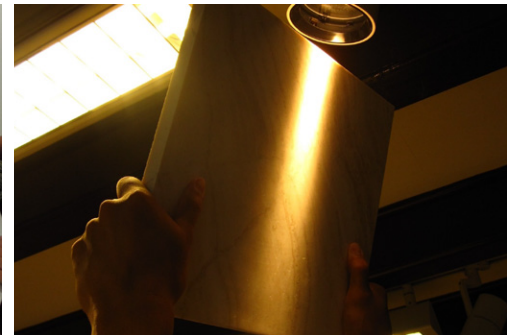
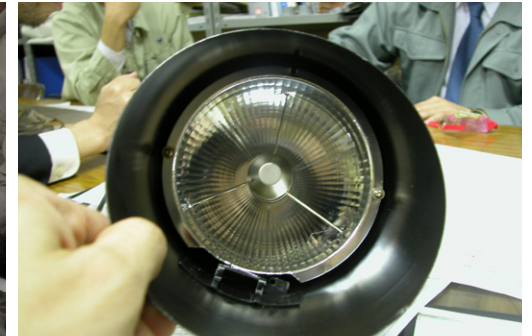
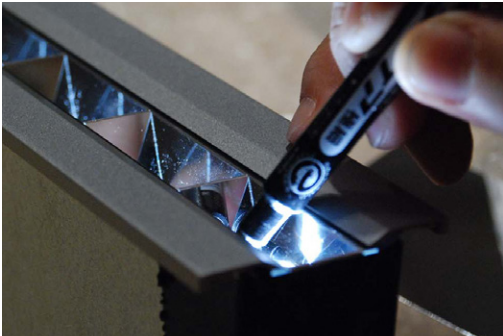
Design Process

Phase1 ConceptDesign-Phase2SchimaticDesign-Phase3DetailDevelopment-Phase4TenderDocumentation-Phase5SiteSupervision-Phase6SiteCommissioning

From documents preparation to award

During this stage, we will recommend to the Client, suitable contractors and/or suppliers/manufacturers who may be invited to submit tenders for the lighting works and supply contract, and assist the Client and other appropriate professional consultants where necessary in short-listing of tenderers. Drawings, Specifications, Schedules and Details that are necessary for the sake of complete comprehension of our design intention and strategy are given to the tenderers. We also assist the Client in evaluating the tender returns and the acceptability of the prices quoted. Interviews and sample tests are also part and parcel of this stage.

1. Preparation of tender documents
2. Clarification of any doubts, queries raised by the tenderer or vice versa
3. Evaluation of tender returns
4. Interviews of the tenderers along with the Client and other consultants
5. Analysing acceptability of tender offer including cost



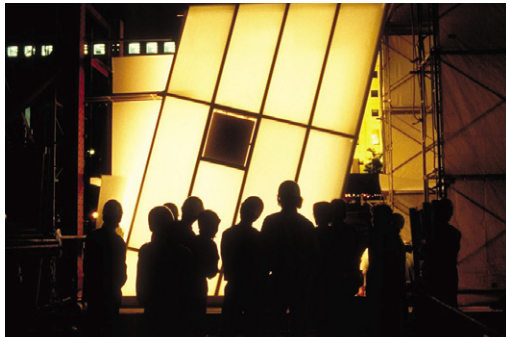
Design Process

Phase1 ConceptDesign-Phase2SchimaticDesign-Phase3DetailDevelopment-Phase4TenderDocumentation-Phase5SiteSupervision-Phase6SiteCommissioning

Supervising the lighting installation

Lighting design can only be complete at the construction site. Many times, drawings alone cannot correctly communicate our design intent and to clarify our ideas to the builders on-site, we hold a special lighting design briefing. We also anticipate the process and flow of each construction site to confirm lighting effects through mock up experiments on-site or to adjust for other design changes. Focusing and coordination of operation scene changes are important steps just before the final commissioning.

1. Explanation of lighting design intent and key points to builders
2. Participation in on-site meetings
3. Response to design changes and design revisions
4. Checks and coordination of architectural shop drawings with the lighting scheme
5. Checks and approval of light fixture shop drawings
6. Supervision of custom-made fixtures
7. On-site supervision of lighting mock ups
8. Inspection of status of construction
9. Final lighting adjustments, focusing, and supervision of lighting control system



Design Process

Phase1 ConceptDesign-Phase2SchimaticDesign-Phase3DetailDevelopment-Phase4TenderDocumentation-Phase5SiteSupervision-Phase6SiteCommissioning

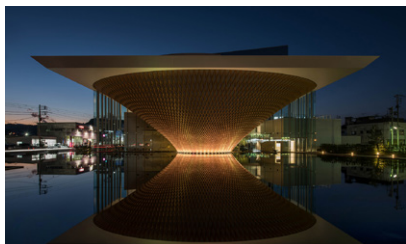
Completing the project

During this stage, we conduct the final setting up of the lighting scenes to our satisfaction and to match the design intention. A maintenance schedule is prepared and handed over to the Client for future reference. The Client and consultants are usually invited to the site to see for themselves the lighting effect and feedback is taken. Minor tweaking to the lighting effect may be made during this stage. Any defects noticed are notified to the relevant parties for immediate rectification within the Defects Liability Period. A certificate of completion is also handed over to the Client from us.

1. Site visits to supervise the final scene setting and light effects
2. Engaging the Client and other consultants in site walkthrough to show the final effect
3. Assessing any damages or defects requiring rectification



Selected Awards



Mt. Fuji World Heritage centre
2019 IALD Award <Award of Excellence>
2018 IESNA Award <Award of Merit>
2018 IEI-J Lighting Design Award <Award of Merit>



Nihonbashi Mitsukoshi
2019 IEI-J Award <Award of Excellence>
2018 IESNA Award <Award of Merit>



The Sanya Edition
2017 IESNA Award <Award of Merit>



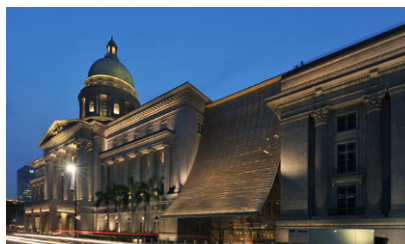
Mediacorp Campus
2017 IESNA Award <Award of Merit>



CapitaGreen
2017 IESNA Award <Award of Merit>
2015 CTBUH <Best Tall Building Winner>



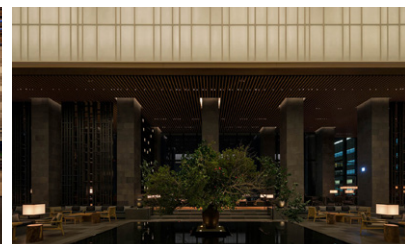
Amanemu
2017 IALD Award <Award of Merit>



National Gallery Singapore
2017 IALD Award <Award of Merit>
2016 IESNA Award <Award of Merit>



'Minna no Mori' Gifu Media Cosmos
2016 IALD Award <Award of Merit + Sustainability>
2016 IESNA Award <Award of Distinction>
2016 IEI-J Illumination Award <Award of Distinction>



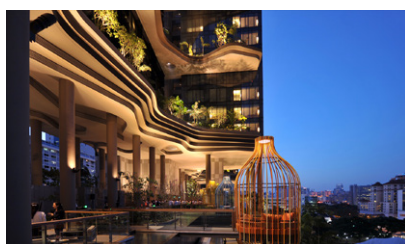
Aman Tokyo
2016 IALD Award <Award of Merit>



d'Leedon
2015 IESNA Award <Award of Merit>



Victoria Theatre & Concert Hall
2015 IESNA Award <Award of Merit>



PARKROYAL on Pickering
2014 IESNA Award <Award of Merit>



Gardens by the Bay, Bay South
2014 Award of Merit
2013 IESNA Award <Award of Distinction>
2013 LAMP Award



Preservation and Restoration of the Tokyo Station Marunouchi Building
2013 IESNA Award <Award of Merit>



Lighting Masterplan for Singapore's City Centre
2010 Singapore President's Design Award <Design of the Year>

©Lighting Planners Associates

All rights reserved. No part of this publication may be used, reproduced or transmitted in any form or by any means, electronic or mechanical, including photocopy, recording, or any information storage and retrieval system, for any purpose whatsoever, without permission in writing. All rights to this publication are held by Lighting Planners Associates. Requests for permission to use or make copies of any part of this publication should be mailed